

# SunShine Co.

BRINGING THE SUN TO YOU

Currently trading from 19 locations, with new sites recently acquired in Watford, South Woodham Ferrers, Dover and Bromley, Sunshine Co. are looking to expand significantly over the next 5 years, and are urgently seeking opportunities in the South East including within the M25.

- 1,000 - 2,000 sq. ft on ground floor
- Within close proximity to supermarkets & gyms
- Retail parks preferred but busy High Street locations will be considered
- Immediate onsite car parking
- Market rents paid
- Sui generis planning required

10  
NEW SITES  
REQUIRED IN  
2023/24

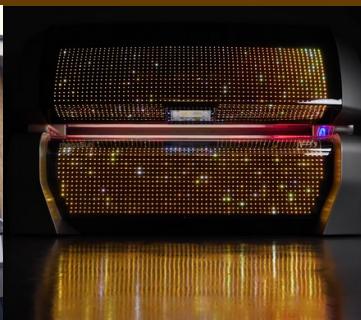


## NEW TARGET LOCATIONS

Ashford  
Brighton  
Broadstairs/Westwood Cross  
Canterbury  
Crawley  
Croydon  
Dartford  
Eastbourne - Under Offer

Eltham  
Epping  
Gravesend  
Hemel Hempstead  
High Wycombe  
Milton Keynes  
Staines

Other locations also considered.



**Cradick**  
RETAIL PROPERTY CONSULTANTS

Please contact Matt Ritson

Tel: 01892 707500  
Mob: 07484 022795  
Email: [mritson@cradick.co.uk](mailto:mritson@cradick.co.uk)